

AVERAGE TIME

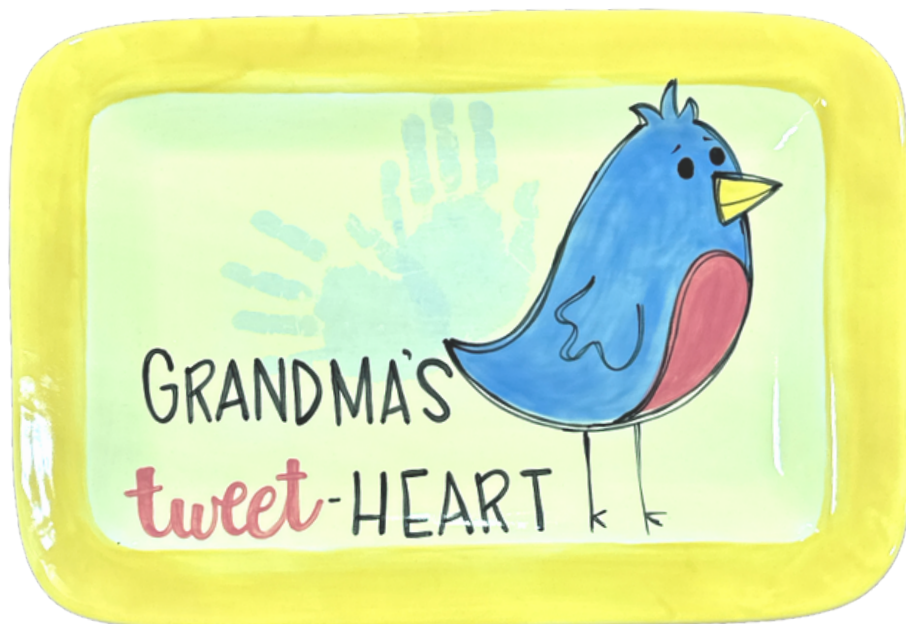
2
HOURS

CHALLENGE LEVEL



Simple Techniques - Stunning Effects

MOTHER'S DAY HANDPRINT BIRD



MATERIALS

CCX610 Rectangular Platter
Detail Brush
Medium Brush
Liner Brush
Fan Brush
NCR Pattern
Pen

COLORS

CMM 64 - Sky Blue
CMM 31 - Licorice
CMM 76 - Lemon Ice
CMM 19 - Banana Boat
CMM 5 - Coral Reef
91 - Blue Ice

Color Me Mine®

© 1998-2021 Color Me Mine Enterprises, Inc. All Rights Reserved.

INSTRUCTIONS

1. Paint inside the rim of the plate with 3 coats of Lemon Ice.
2. Paint the edge of the plate with 3 coats of Banana Boat.
3. Once the background is dry, trace on your NCR pattern by pressing firmly with a pen as you trace over all of the lines.
4. You can either print the child's hands before painting the bird, or after painting the bird. We used Blue Ice, but any shade of blue will work.
5. Fill in the bird's body with 3 coats of Sky Blue.
6. Fill in the bird's belly with 3 coats of Coral Reef.
7. Use a detail brush to fill in the beak with 3 coats of Banana Boat.
8. Paint in the word "tweet" using a detail brush and the Coral Reef paint.
9. Water down some Licorice paint with 50% water to 50% paint. Create a messy double outline around your bird and the legs. This is supposed to look whimsical, not perfect.
10. Use a detail brush to apply the rest of the lettering with one coat of Licorice.
11. Add the child's name and the year to either the front or back of the plate.

TIPS

- The harder you press on the brush the heavier the lines will be.
- A darker blue color will give a more prominent handprint

Color Me Mine®

© 1998-2021 Color Me Mine Enterprises, Inc. All Rights Reserved.