

AVERAGE TIME

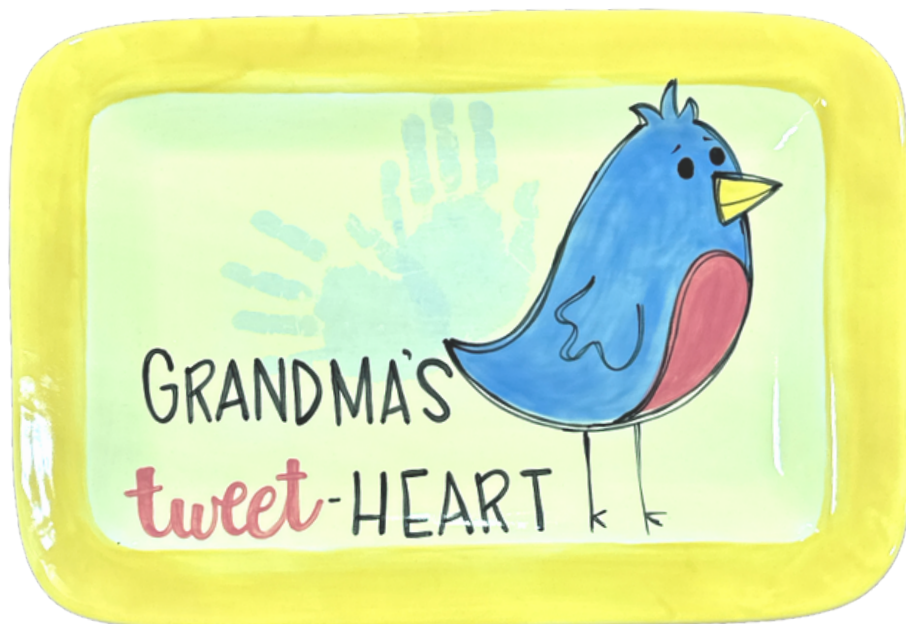
2  
HOURS

CHALLENGE LEVEL



Simple Techniques - Stunning Effects

# MOTHER'S DAY HANDPRINT BIRD



## MATERIALS

CCX610 Rectangular Platter  
Detail Brush  
Medium Brush  
Liner Brush  
Fan Brush  
NCR Pattern  
Pen

## COLORS

CMM 64 - Sky Blue  
CMM 31 - Licorice  
CMM 76 - Lemon Ice  
CMM 19 - Banana Boat  
CMM 5 - Coral Reef  
91 - Blue Ice

*Color Me Mine®*

© 1998-2021 Color Me Mine Enterprises, Inc. All Rights Reserved.

## INSTRUCTIONS

1. Paint inside the rim of the plate with 3 coats of Lemon Ice.
2. Paint the edge of the plate with 3 coats of Banana Boat.
3. Once the background is dry, trace on your NCR pattern by pressing firmly with a pen as you trace over all of the lines.
4. You can either print the child's hands before painting the bird, or after painting the bird. We used Blue Ice, but any shade of blue will work.
5. Fill in the bird's body with 3 coats of Sky Blue.
6. Fill in the bird's belly with 3 coats of Coral Reef.
7. Use a detail brush to fill in the beak with 3 coats of Banana Boat.
8. Paint in the word "tweet" using a detail brush and the Coral Reef paint.
9. Water down some Licorice paint with 50% water to 50% paint. Create a messy double outline around your bird and the legs. This is supposed to look whimsical, not perfect.
10. Use a detail brush to apply the rest of the lettering with one coat of Licorice.
11. Add the child's name and the year to either the front or back of the plate.

## TIPS

- The harder you press on the brush the heavier the lines will be.
- A darker blue color will give a more prominent handprint

*Color Me Mine®*

© 1998-2021 Color Me Mine Enterprises, Inc. All Rights Reserved.

GRANDMA'S  
tweet HEART

